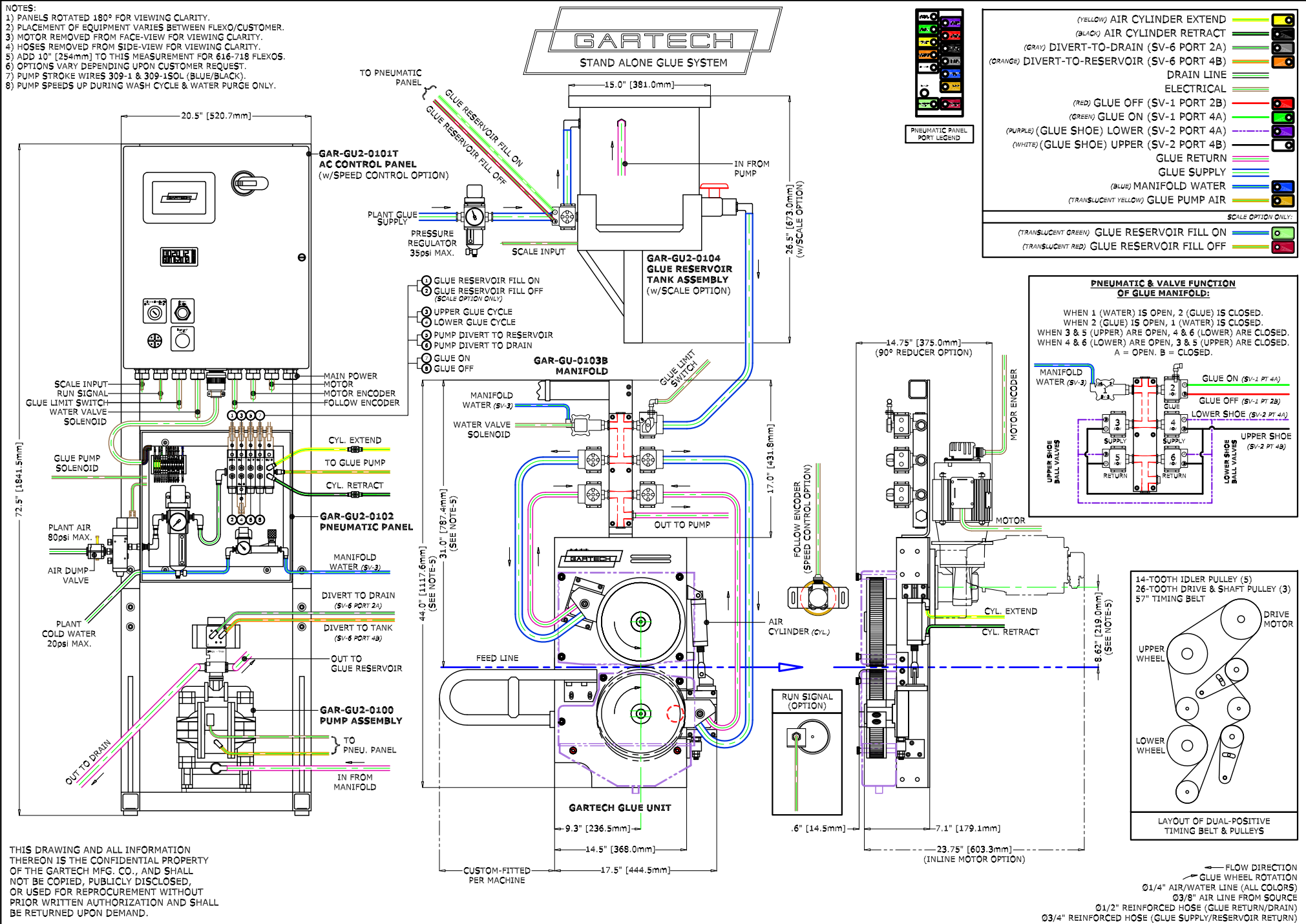


NOTES:

- 1) PANELS ROTATED 180° FOR VIEWING CLARITY.
- 2) PLACEMENT OF EQUIPMENT VARIES BETWEEN FLEXO/CUSTOMER.
- 3) MOTOR REMOVED FROM FACE-VIEW FOR VIEWING CLARITY.
- 4) HOSES REMOVED FROM SIDE-VIEW FOR VIEWING CLARITY.
- 5) ADD 10" [254mm] TO THIS MEASUREMENT FOR 616-718 FLEXOS.
- 6) OPTIONS VARY DEPENDING UPON CUSTOMER REQUEST.
- 7) PUMP STROKE WIRES 309-1 & 309-1SOL (BLUE/BLACK).
- 8) PUMP SPEEDS UP DURING WASH CYCLE & WATER PURGE ONLY.



(YELLOW) AIR CYLINDER EXTEND	
(BLACK) AIR CYLINDER RETRACT	
(GRAY) DIVERT-TO-DRAIN (SV-6 PORT 2A)	
(ORANGE) DIVERT-TO-RESERVOIR (SV-6 PORT 4B)	
DRAIN LINE	
ELECTRICAL	
(RED) GLUE OFF (SV-1 PORT 2B)	
(GREEN) GLUE ON (SV-1 PORT 4A)	
(PURPLE) (GLUE SHOE) LOWER (SV-2 PORT 4A)	
(WHITE) (GLUE SHOE) UPPER (SV-2 PORT 4B)	
GLUE RETURN	
GLUE SUPPLY	
(BLUE) MANIFOLD WATER	
(TRANSLUCENT YELLOW) GLUE PUMP AIR	
SCALE OPTION ONLY:	
(TRANSLUCENT GREEN) GLUE RESERVOIR FILL ON	
(TRANSLUCENT RED) GLUE RESERVOIR FILL OFF	

